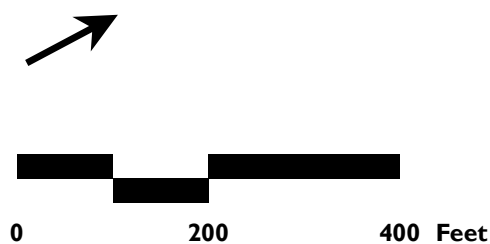
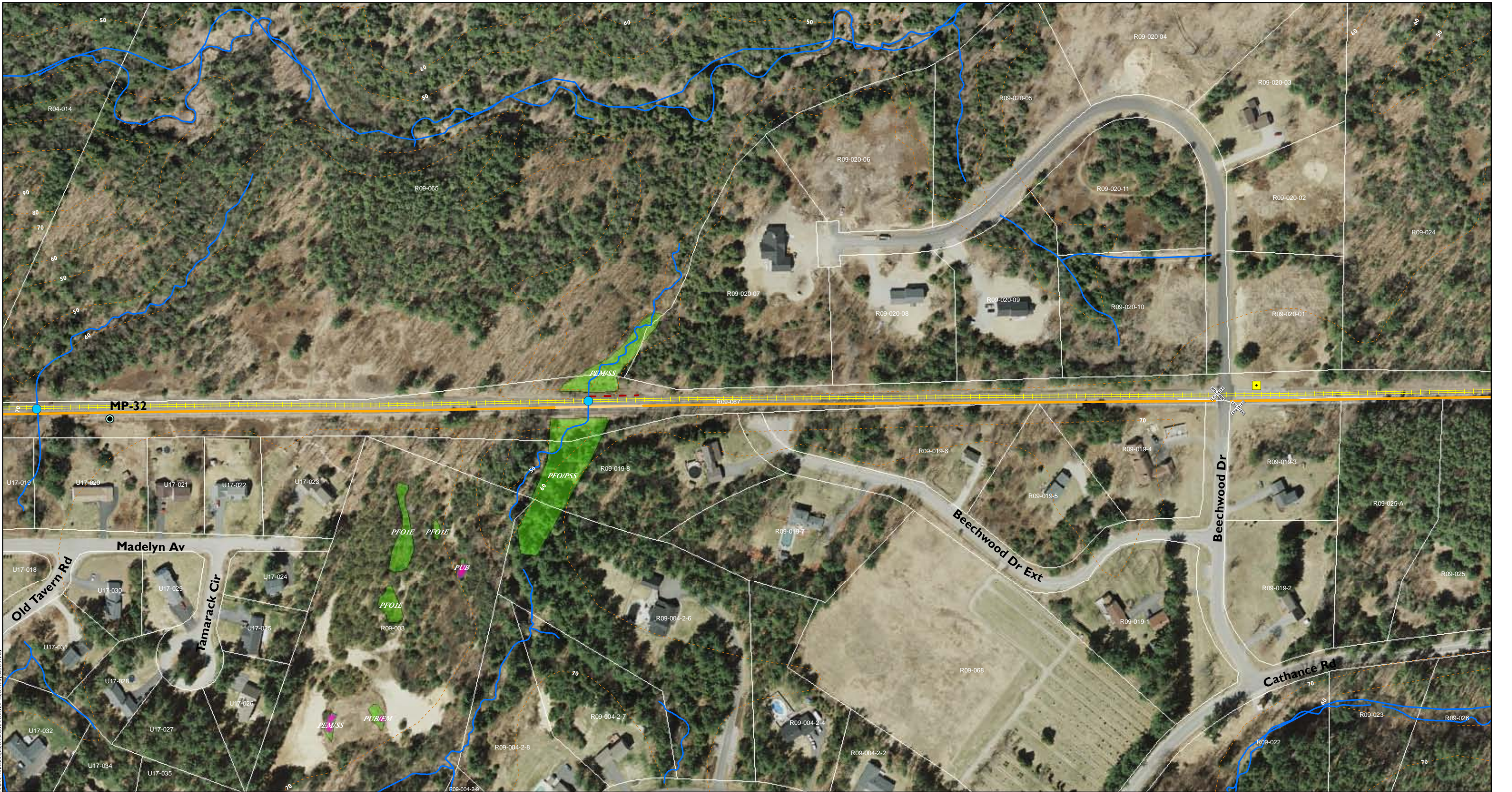


Legend

- | | | | | | | |
|---|---|---|--|---|---|---|
| Single Track Section
Dual Track Section
Bridge Crossing | Typical Trail Sections
Normal Path Typical
Normal Fill Typical
Ledge A Typical
Ledge B Typical
Extreme Fill Typical | Mile Post
Stone Monuments
Railroad Equipment
Crossing Signal Gates
Crossing Sign | Crossing Signal
Electrical Box
Signal Control
Switch Station
Other Trails
Culvert | Property Marker
Miscellaneous Points
Concrete/Stone Wall
Fence
Areas of Ledge
Steep Slopes
Existing Androscoggin Multi-Use Path
Potential Trail Connection | Field Identified Potential Vernal Pool
MEIFW Potential Vernal Pool
Wetland Boundary
Rare, Endangered, Threatened, Species
Bald Eagle Nest Buffer
Tidewater Mucket
Inland Waterfowl & Wading Bird Habitat
Tidal Waterfowl & Wading Bird Habitat | Deer Wintering Area
FLOODWAY
FEMA 100-Yr Flood
Conserved Land
Streams
Town Boundary
10' Contours |
|---|---|---|--|---|---|---|
- Vanasse Hangen Brustlin, Inc.**

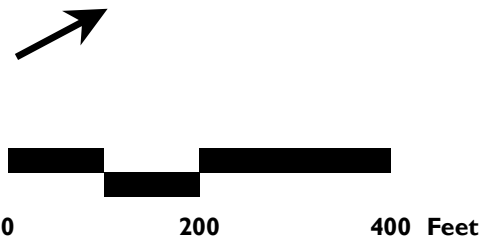
100 Water Street, Suite 200, Portland, ME 04101
 Tel: 207.633.8800 Fax: 207.633.8809
 www.vhb.com





Legend

- | | | | | | | |
|------------------------|------------------------|-------------------------|-------------------|---|--|-----------------------|
| — Single Track Section | Typical Trail Sections | ● Mile Post | ⚡ Crossing Signal | ▲ Property Marker | ● Field Identified Potential Vernal Pool | 🦌 Deer Wintering Area |
| == Dual Track Section | Normal Path Typical | ◇ Stone Monuments | ⚡ Electrical Box | ▲ Miscellaneous Points | ■ MEIFW Potential Vernal Pool | FLOODWAY |
| — Bridge Crossing | Normal Fill Typical | ⚡ Railroad Equipment | ⚡ Signal Control | — Concrete/Stone Wall | ■ Wetland Boundary | ▨ FEMA 100-Yr Flood |
| | Ledge A Typical | ⚡ Crossing Signal Gates | ⚡ Switch Station | — Fence | Rare, Endangered, Threatened, Species | ▨ Conserved Land |
| | Ledge B Typical | ⚡ Crossing Sign | — Other Trails | — Areas of Ledge | 🦅 Bald Eagle Nest Buffer | — Streams |
| | Extreme Fill Typical | | ● Culvert | — Steep Slopes | 🦆 Tidewater Mucket | ▨ Town Boundary |
| | | | | — Existing Androscooggin Multi-Use Path | 🦆 Inland Waterfowl & Wading Bird Habitat | --- 10' Contours |
| | | | | — Potential Trail Connection | 🦆 Tidal Waterfowl & Wading Bird Habitat | |

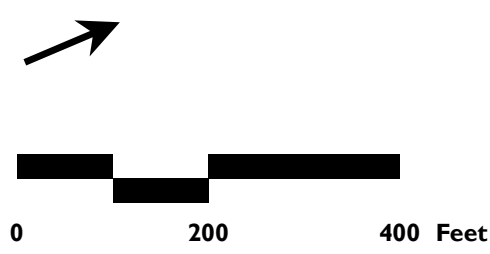


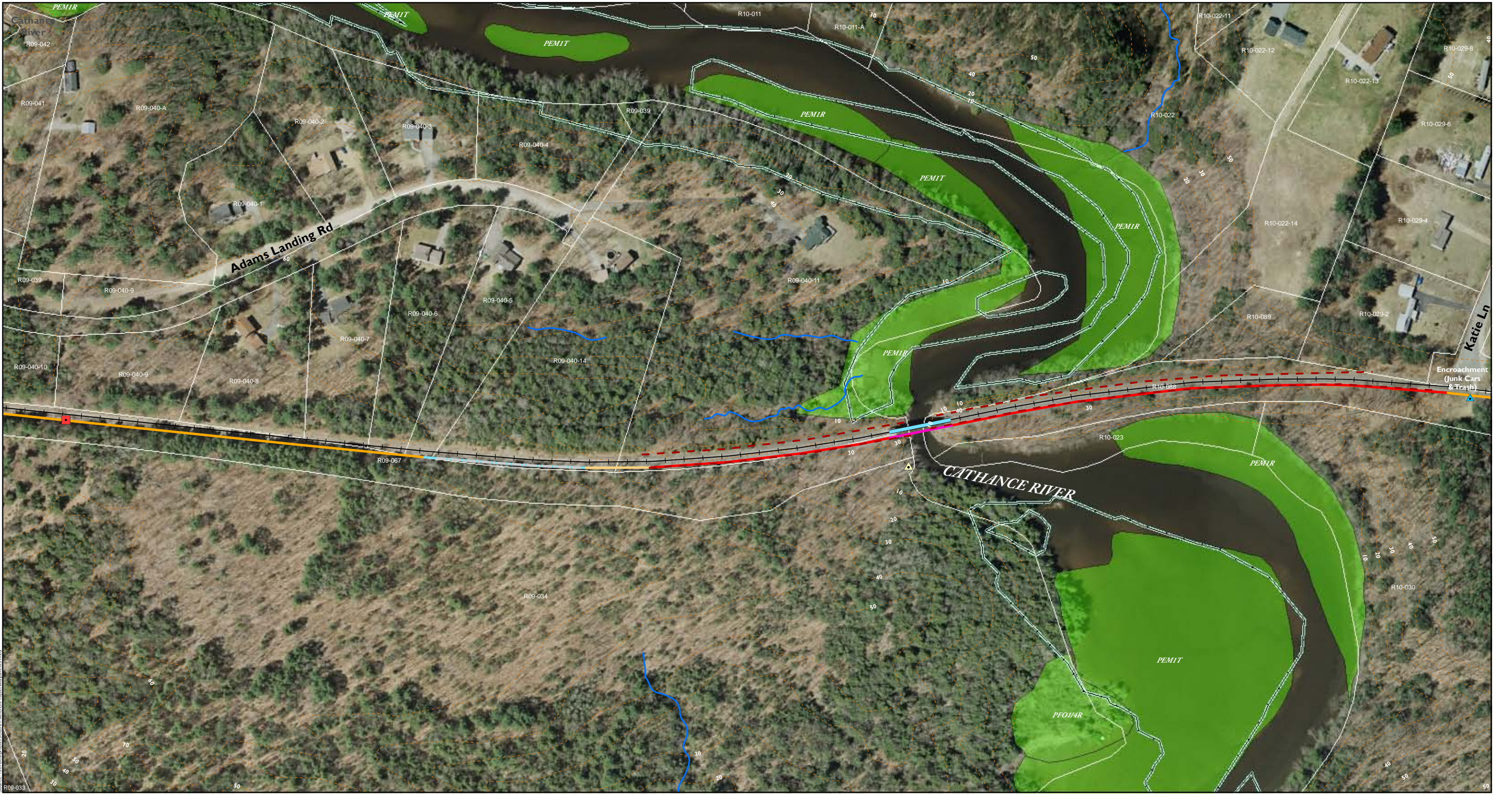


Source: Unpublished project 5/5/2019 10:05:50 Project MapSheet.mxd

Legend

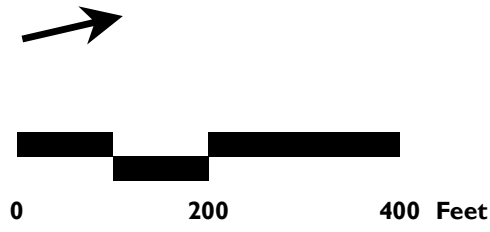
- | | | | | | | |
|------------------------|----------------------------|-------------------------|-------------------|--|--|-----------------------|
| — Single Track Section | Typical Trail Sections | ● Mile Post | ⛶ Crossing Signal | ▲ Property Marker | ● Field Identified Potential Vernal Pool | 🦌 Deer Wintering Area |
| == Dual Track Section | Normal Path Typical | ◇ Stone Monuments | ⚡ Electrical Box | ▲ Miscellaneous Points | ■ MEIFW Potential Vernal Pool | FLOODWAY |
| — Bridge Crossing | Normal Fill Typical | Railroad Equipment | ■ Signal Control | — Concrete/Stone Wall | 🌿 Wetland Boundary | ▨ FEMA 100-Yr Flood |
| — Ledge A Typical | Ledge B Typical | ✕ Crossing Signal Gates | Ⓢ Switch Station | — Fence | Rare, Endangered, Threatened, Species | ▨ Conserved Land |
| — Extreme Fill Typical | Other Trails | ⛔ Crossing Sign | ● Culvert | — Areas of Ledge | 🦅 Bald Eagle Nest Buffer | ▨ Town Boundary |
| | Steep Slopes | | | — Existing Androscoogin Multi-Use Path | 🐊 Tidewater Mucket | — 10' Contours |
| | Potential Trail Connection | | | — Potential Trail Connection | 🦢 Inland Waterfowl & Wading Bird Habitat | |
| | | | | | 🦢 Tidal Waterfowl & Wading Bird Habitat | |

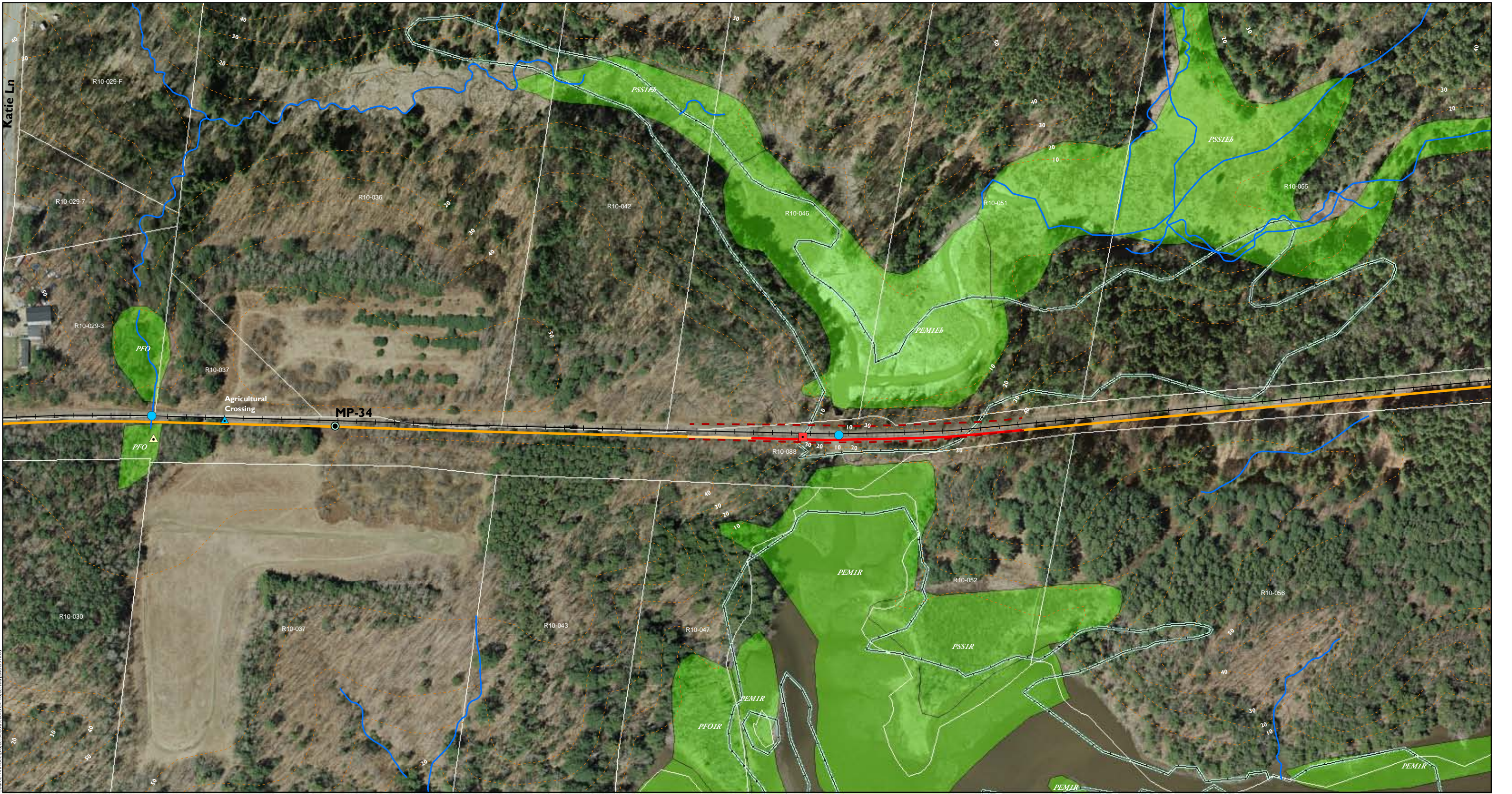




Legend

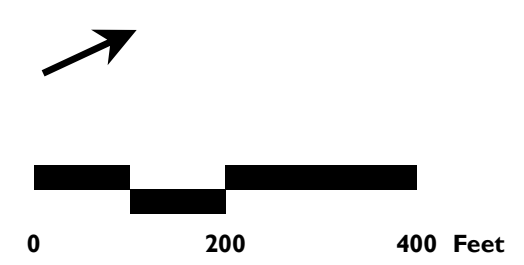
- | | | | | | | |
|------------------------|--------------------------|-------------------------|-------------------|--|--|-----------------------|
| — Single Track Section | — Typical Trail Sections | ● Mile Post | ⛶ Crossing Signal | ▲ Property Marker | ● Field Identified Potential Vernal Pool | 🦌 Deer Wintering Area |
| == Dual Track Section | — Normal Path Typical | ◇ Stone Monuments | ■ Electrical Box | ▲ Miscellaneous Points | ■ MEIFW Potential Vernal Pool | FLOODWAY |
| — Bridge Crossing | — Normal Fill Typical | — Railroad Equipment | ■ Signal Control | — Concrete/Stone Wall | — Wetland Boundary | ▨ FEMA 100-Yr Flood |
| | — Ledge A Typical | ✕ Crossing Signal Gates | ■ Switch Station | — Fence | Rare, Endangered, Threatened, Species | ▨ Conserved Land |
| | — Ledge B Typical | ⊗ Crossing Sign | — Other Trails | — Areas of Ledge | — Bald Eagle Nest Buffer | ▨ Town Boundary |
| | — Extreme Fill Typical | | ● Culvert | — Steep Slopes | — Tidewater Mucket | — Streams |
| | | | | — Existing Androskoggin Multi-Use Path | — Inland Waterfowl & Wading Bird Habitat | — 10' Contours |
| | | | | — Potential Trail Connection | — Tidal Waterfowl & Wading Bird Habitat | |





Legend

- | | | | | | | |
|------------------------|--------------------------|-------------------------|-------------------|---|--|-----------------------|
| — Single Track Section | — Typical Trail Sections | ● Mile Post | ⚡ Crossing Signal | ▲ Property Marker | ● Field Identified Potential Vernal Pool | 🦌 Deer Wintering Area |
| — Dual Track Section | — Normal Path Typical | ◇ Stone Monuments | ⚡ Electrical Box | ▲ Miscellaneous Points | ■ MEIFW Potential Vernal Pool | FLOODWAY |
| — Bridge Crossing | — Normal Fill Typical | — Railroad Equipment | ■ Signal Control | — Concrete/Stone Wall | — Wetland Boundary | ▨ FEMA 100-Yr Flood |
| — Ledge A Typical | — Ledge B Typical | ✕ Crossing Signal Gates | Ⓢ Switch Station | — Fence | — Rare, Endangered, Threatened, Species | ▨ Conserved Land |
| — Extreme Fill Typical | | ⊗ Crossing Sign | — Other Trails | — Areas of Ledge | — Bald Eagle Nest Buffer | — Streams |
| | | | ● Culvert | — Steep Slopes | — Tidewater Mucket | — Town Boundary |
| | | | | — Existing Androscooggin Multi-Use Path | — Inland Waterfowl & Wading Bird Habitat | — 10' Contours |
| | | | | — Potential Trail Connection | — Tidal Waterfowl & Wading Bird Habitat | |





Source: Unpublished project 5/2019, 2019 GIS Project Mapsheet.mxd

Legend

- | | | | | | | |
|------------------------|------------------------|-------------------------|-------------------|--|--|-----------------------|
| — Single Track Section | Typical Trail Sections | ● Mile Post | ✕ Crossing Signal | ▲ Property Marker | ● Field Identified Potential Vernal Pool | 🦌 Deer Wintering Area |
| == Dual Track Section | Normal Path Typical | ◇ Stone Monuments | ■ Electrical Box | ▲ Miscellaneous Points | ■ MEIFW Potential Vernal Pool | FLOODWAY |
| — Bridge Crossing | Normal Fill Typical | Railroad Equipment | ■ Signal Control | — Concrete/Stone Wall | — Wetland Boundary | ▨ FEMA 100-Yr Flood |
| | Ledge A Typical | ✕ Crossing Signal Gates | ● Switch Station | — Fence | Rare, Endangered, Threatened, Species | ▨ Conserved Land |
| | Ledge B Typical | ⊗ Crossing Sign | — Other Trails | — Areas of Ledge | 🦅 Bald Eagle Nest Buffer | — Streams |
| | Extreme Fill Typical | | ● Culvert | — Steep Slopes | 🦆 Tidewater Mucket | ▨ Town Boundary |
| | | | | — Existing Androskoggin Multi-Use Path | 🦆 Inland Waterfowl & Wading Bird Habitat | --- 10' Contours |
| | | | | — Potential Trail Connection | 🦆 Tidal Waterfowl & Wading Bird Habitat | |



Sheet 8
**Merrymeeting Trail
Corridor Study**

Topsham to Gardiner Maine

March 2011



Legend

- | | | | | | | |
|--------------------------|----------------------------|-------------------------|-------------------|--|--|-----------------------|
| —+— Single Track Section | —+— Typical Trail Sections | ● Mile Post | ⛶ Crossing Signal | ▲ Property Marker | ● Field Identified Potential Vernal Pool | 🦌 Deer Wintering Area |
| == Dual Track Section | — Normal Path Typical | ◇ Stone Monuments | ■ Electrical Box | ▲ Miscellaneous Points | ■ MEIFW Potential Vernal Pool | FLOODWAY |
| — Bridge Crossing | — Normal Fill Typical | ⛶ Railroad Equipment | ■ Signal Control | — Concrete/Stone Wall | ■ Wetland Boundary | ▨ FEMA 100-Yr Flood |
| | — Ledge A Typical | ⛶ Crossing Signal Gates | ■ Switch Station | — Fence | ■ Rare, Endangered, Threatened, Species | ▨ Conserved Land |
| | — Ledge B Typical | ⛶ Crossing Sign | ● Culvert | — Areas of Ledge | ■ Bald Eagle Nest Buffer | — Streams |
| | — Extreme Fill Typical | | | — Steep Slopes | ■ Tidewater Mucket | ▨ Town Boundary |
| | | | | — Existing Androskoggin Multi-Use Path | ■ Inland Waterfowl & Wading Bird Habitat | — 10' Contours |
| | | | | — Potential Trail Connection | ■ Tidal Waterfowl & Wading Bird Habitat | |





Legend

- | | | | | | | |
|------------------------|------------------------|-------------------------|-------------------|---|--|-----------------------|
| — Single Track Section | Typical Trail Sections | ● Mile Post | ✕ Crossing Signal | ▲ Property Marker | ● Field Identified Potential Vernal Pool | 🦌 Deer Wintering Area |
| == Dual Track Section | Normal Path Typical | ◇ Stone Monuments | ■ Electrical Box | ▲ Miscellaneous Points | ■ MEIFW Potential Vernal Pool | FLOODWAY |
| — Bridge Crossing | Normal Fill Typical | Railroad Equipment | ■ Signal Control | — Concrete/Stone Wall | — Wetland Boundary | ▨ FEMA 100-Yr Flood |
| | Ledge A Typical | ✕ Crossing Signal Gates | ● Switch Station | — Fence | Rare, Endangered, Threatened, Species | ▨ Conserved Land |
| | Ledge B Typical | ⊗ Crossing Sign | ● Other Trails | — Areas of Ledge | — Bald Eagle Nest Buffer | — Streams |
| | Extreme Fill Typical | | ● Culvert | — Steep Slopes | — Tidewater Mucket | ▨ Town Boundary |
| | | | | — Existing Androscooggin Multi-Use Path | — Inland Waterfowl & Wading Bird Habitat | — 10' Contours |
| | | | | — Potential Trail Connection | — Tidal Waterfowl & Wading Bird Habitat | |



Sheet 10

**Merrymeeting Trail
Corridor Study**

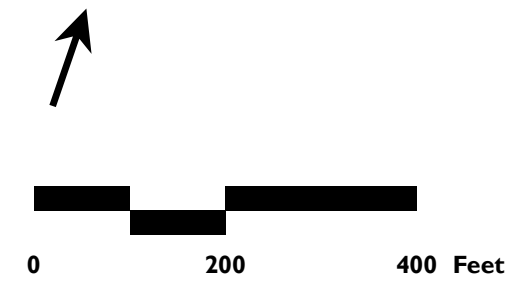
Topsham to Gardiner Maine

March 2011



Legend

- | | | | | | | |
|------------------------|------------------------|-------------------------|-------------------|--|--|-----------------------|
| — Single Track Section | Typical Trail Sections | ● Mile Post | ✕ Crossing Signal | ▲ Property Marker | ● Field Identified Potential Vernal Pool | 🦌 Deer Wintering Area |
| == Dual Track Section | Normal Path Typical | ◇ Stone Monuments | ■ Electrical Box | ▲ Miscellaneous Points | ■ MEIFW Potential Vernal Pool | FLOODWAY |
| — Bridge Crossing | Normal Fill Typical | Railroad Equipment | ■ Signal Control | — Concrete/Stone Wall | ■ Wetland Boundary | ▨ FEMA 100-Yr Flood |
| | Ledge A Typical | ✕ Crossing Signal Gates | ■ Switch Station | — Fence | Rare, Endangered, Threatened, Species | ▨ Conserved Land |
| | Ledge B Typical | ⊗ Crossing Sign | — Other Trails | — Areas of Ledge | ■ Bald Eagle Nest Buffer | ▨ Town Boundary |
| | Extreme Fill Typical | | ● Culvert | — Steep Slopes | ■ Tidewater Mucket | ▨ 10' Contours |
| | | | | — Existing Androscoogin Multi-Use Path | ■ Inland Waterfowl & Wading Bird Habitat | |
| | | | | — Potential Trail Connection | ■ Tidal Waterfowl & Wading Bird Habitat | |





Legend

- | | | | | | | |
|--------------------------|------------------------|-------------------------|------------------------------|--|--|-----------------------|
| —+— Single Track Section | Typical Trail Sections | ● Mile Post | ⚡ Crossing Signal | ▲ Property Marker | ● Field Identified Potential Vernal Pool | 🦌 Deer Wintering Area |
| == Dual Track Section | Normal Path Typical | ◇ Stone Monuments | ■ Electrical Box | ▲ Miscellaneous Points | ■ MEIFW Potential Vernal Pool | FLOODWAY |
| — Bridge Crossing | Normal Fill Typical | Railroad Equipment | ■ Signal Control | — Concrete/Stone Wall | Wetland Boundary | ▨ FEMA 100-Yr Flood |
| | Ledge A Typical | ✕ Crossing Signal Gates | Ⓢ Switch Station | — Fence | Rare, Endangered, Threatened, Species | ▨ Conserved Land |
| | Ledge B Typical | ⊗ Crossing Sign | — Other Trails | — Areas of Ledge | Bald Eagle Nest Buffer | — Streams |
| | Extreme Fill Typical | ● Culvert | — Steep Slopes | — Existing Androscooggin Multi-Use Path | Tidewater Mucket | ▨ Town Boundary |
| | | | — Potential Trail Connection | — Inland Waterfowl & Wading Bird Habitat | ▨ Tidal Waterfowl & Wading Bird Habitat | — 10' Contours |

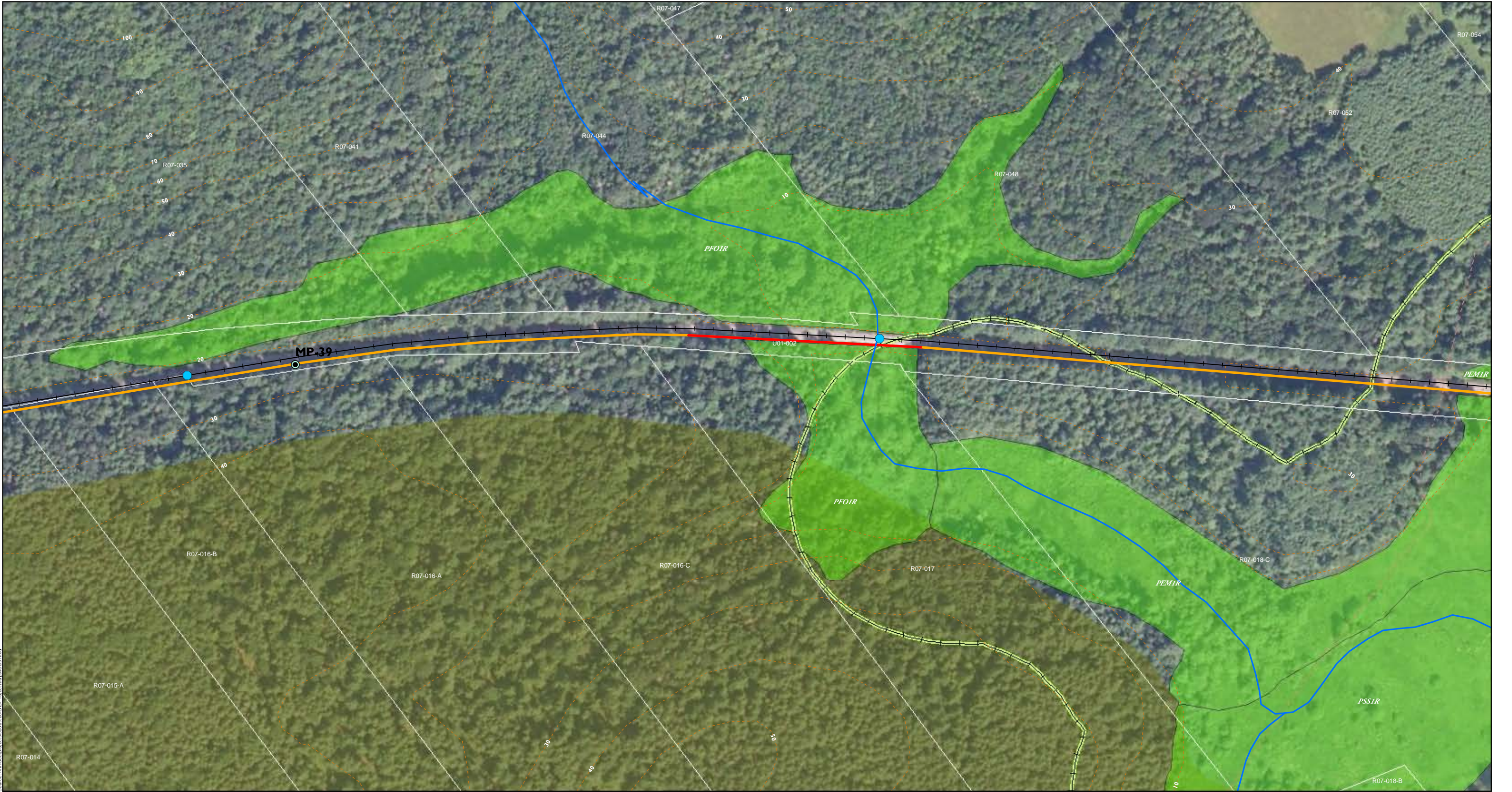


Sheet 13

**Merrymeeting Trail
Corridor Study**

Topsham to Gardiner Maine

March 2011



Legend

- | | | | | | | |
|--------------------------|----------------------------|-------------------------|-------------------|--|--|-----------------------|
| —+— Single Track Section | —+— Typical Trail Sections | ● Mile Post | ⛶ Crossing Signal | ▲ Property Marker | ● Field Identified Potential Vernal Pool | 🦌 Deer Wintering Area |
| == Dual Track Section | — Normal Path Typical | ◇ Stone Monuments | ■ Electrical Box | ▲ Miscellaneous Points | ■ MEIFW Potential Vernal Pool | FLOODWAY |
| — Bridge Crossing | — Normal Fill Typical | ⛶ Railroad Equipment | ■ Signal Control | — Concrete/Stone Wall | ■ Wetland Boundary | ▨ FEMA 100-Yr Flood |
| | — Ledge A Typical | ⛶ Crossing Signal Gates | ● Switch Station | — Fence | ■ Rare, Endangered, Threatened, Species | ▨ Conserved Land |
| | — Ledge B Typical | ⛶ Crossing Sign | — Other Trails | — Areas of Ledge | ■ Bald Eagle Nest Buffer | ▨ Town Boundary |
| | — Extreme Fill Typical | | ● Culvert | — Steep Slopes | ■ Tidewater Mucket | — Streams |
| | | | | — Existing Androscoggin Multi-Use Path | ■ Inland Waterfowl & Wading Bird Habitat | — 10' Contours |
| | | | | — Potential Trail Connection | ■ Tidal Waterfowl & Wading Bird Habitat | |



Sheet 14

**Merrymeeting Trail
Corridor Study**

Topsham to Gardiner Maine

March 2011



Legend

- | | | | | | | |
|------------------------|------------------------|-------------------------|-------------------|--|--|-----------------------|
| — Single Track Section | Typical Trail Sections | ● Mile Post | ✕ Crossing Signal | ▲ Property Marker | ● Field Identified Potential Vernal Pool | 🦌 Deer Wintering Area |
| == Dual Track Section | Normal Path Typical | ◇ Stone Monuments | ■ Electrical Box | ▲ Miscellaneous Points | ■ MEIFW Potential Vernal Pool | FLOODWAY |
| — Bridge Crossing | Normal Fill Typical | Railroad Equipment | ■ Signal Control | — Concrete/Stone Wall | — Wetland Boundary | ▨ FEMA 100-Yr Flood |
| | Ledge A Typical | ✕ Crossing Signal Gates | ● Switch Station | — Fence | — Rare, Endangered, Threatened, Species | ▨ Conserved Land |
| | Ledge B Typical | ⊗ Crossing Sign | — Other Trails | — Areas of Ledge | — Bald Eagle Nest Buffer | — Streams |
| | Extreme Fill Typical | | ● Culvert | — Steep Slopes | — Tidewater Mucket | ▨ Town Boundary |
| | | | | — Existing Androscoogin Multi-Use Path | — Inland Waterfowl & Wading Bird Habitat | — 10' Contours |
| | | | | — Potential Trail Connection | — Tidal Waterfowl & Wading Bird Habitat | |



Sheet 15

**Merrymeeting Trail
Corridor Study**

Topsham to Gardiner Maine

March 2011



—+— Single Track Section

== Dual Track Section

— Bridge Crossing

— Normal Path Typical

— Normal Fill Typical

— Ledge A Typical

— Ledge B Typical

— Extreme Fill Typical

● Mile Post

◇ Stone Monuments

— Railroad Equipment

✕ Crossing Signal Gates

⊗ Crossing Sign

✕ Crossing Signal

■ Electrical Box

■ Signal Control

Ⓢ Switch Station

— Other Trails

● Culvert

▲ Property Marker

▲ Miscellaneous Points

— Concrete/Stone Wall

— Fence

— Areas of Ledge

— Steep Slopes

— Existing Androscooggin Multi-Use Path

— Potential Trail Connection

● Field Identified Potential Vernal Pool

■ MEIFW Potential Vernal Pool

— Wetland Boundary

— Rare, Endangered, Threatened, Species

— Bald Eagle Nest Buffer

— Tidewater Mucket

— Inland Waterfowl & Wading Bird Habitat

— Tidal Waterfowl & Wading Bird Habitat

— Deer Wintering Area

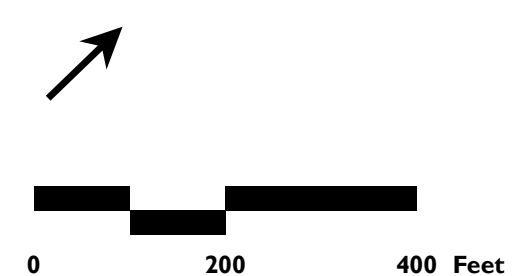
— FLOODWAY

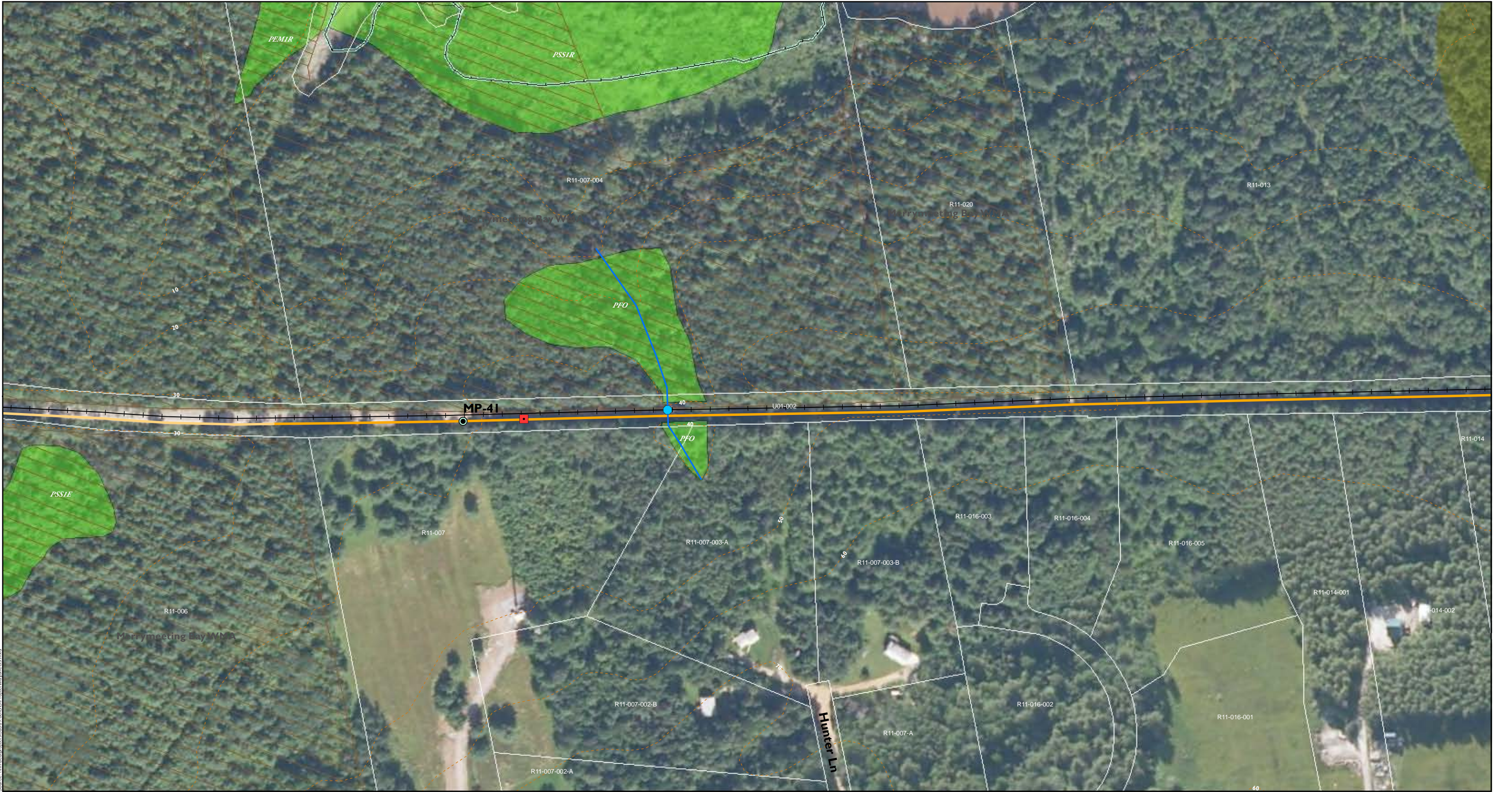
— FEMA 100-Yr Flood

— Conserved Land

— Town Boundary

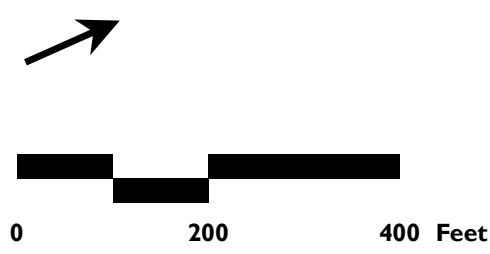
— 10' Contours

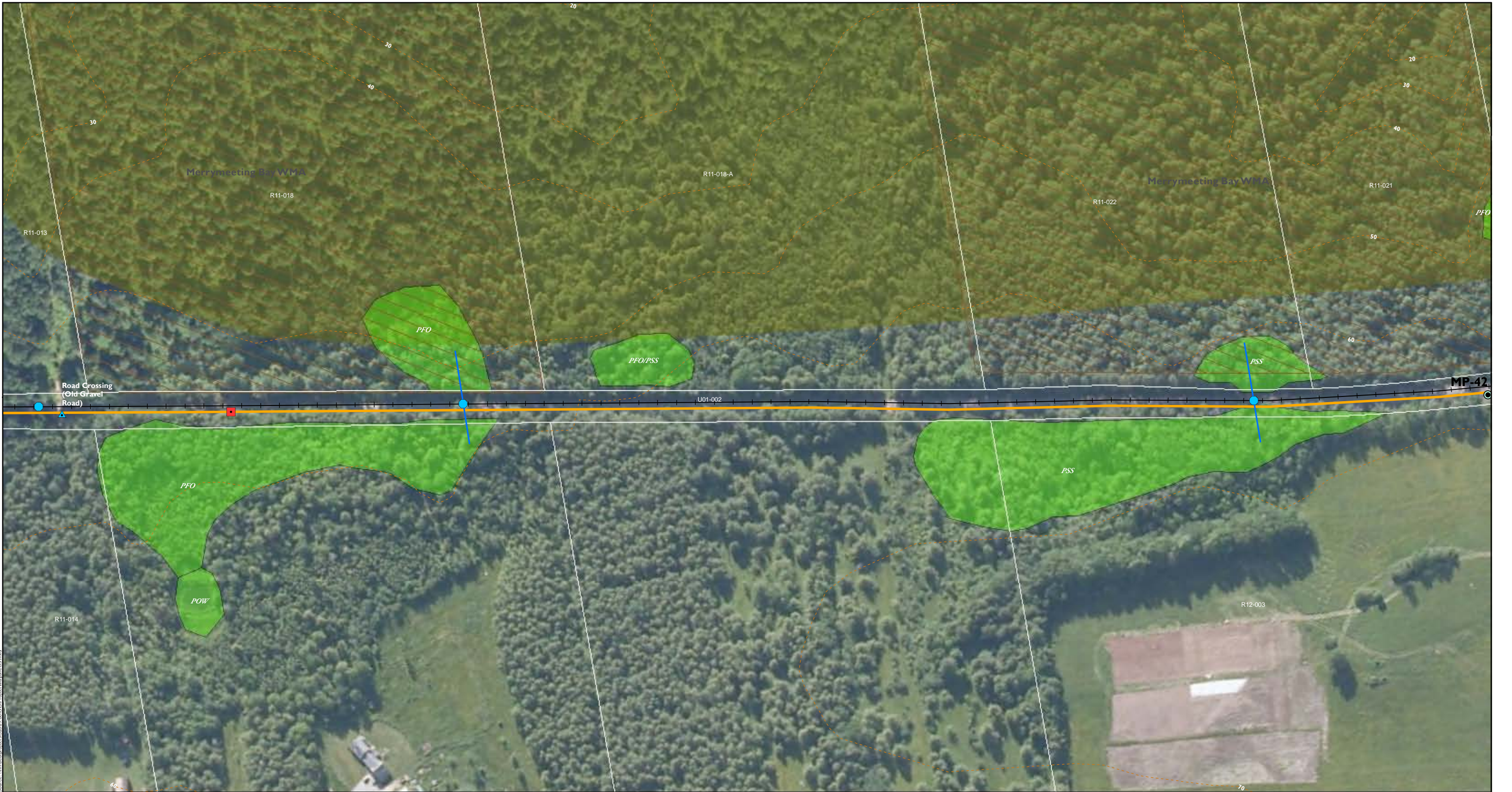




Legend

- | | | | | | | |
|------------------------|------------------------|-------------------------|-------------------|--|--|-----------------------|
| — Single Track Section | Typical Trail Sections | ● Mile Post | ✕ Crossing Signal | ▲ Property Marker | ● Field Identified Potential Vernal Pool | 🦌 Deer Wintering Area |
| == Dual Track Section | Normal Path Typical | ◇ Stone Monuments | ■ Electrical Box | ▲ Miscellaneous Points | ■ MEIFW Potential Vernal Pool | FLOODWAY |
| — Bridge Crossing | Normal Fill Typical | Railroad Equipment | ■ Signal Control | — Concrete/Stone Wall | 🌿 Wetland Boundary | ▨ FEMA 100-Yr Flood |
| | Ledge A Typical | ✕ Crossing Signal Gates | Ⓢ Switch Station | — Fence | Rare, Endangered, Threatened, Species | ▨ Conserved Land |
| | Ledge B Typical | ⊗ Crossing Sign | — Other Trails | — Areas of Ledge | 🦅 Bald Eagle Nest Buffer | — Streams |
| | Extreme Fill Typical | | ● Culvert | — Steep Slopes | 🐊 Tidewater Mucket | ▨ Town Boundary |
| | | | | — Existing Androskoggin Multi-Use Path | 🦆 Inland Waterfowl & Wading Bird Habitat | --- 10' Contours |
| | | | | — Potential Trail Connection | 🦆 Tidal Waterfowl & Wading Bird Habitat | |

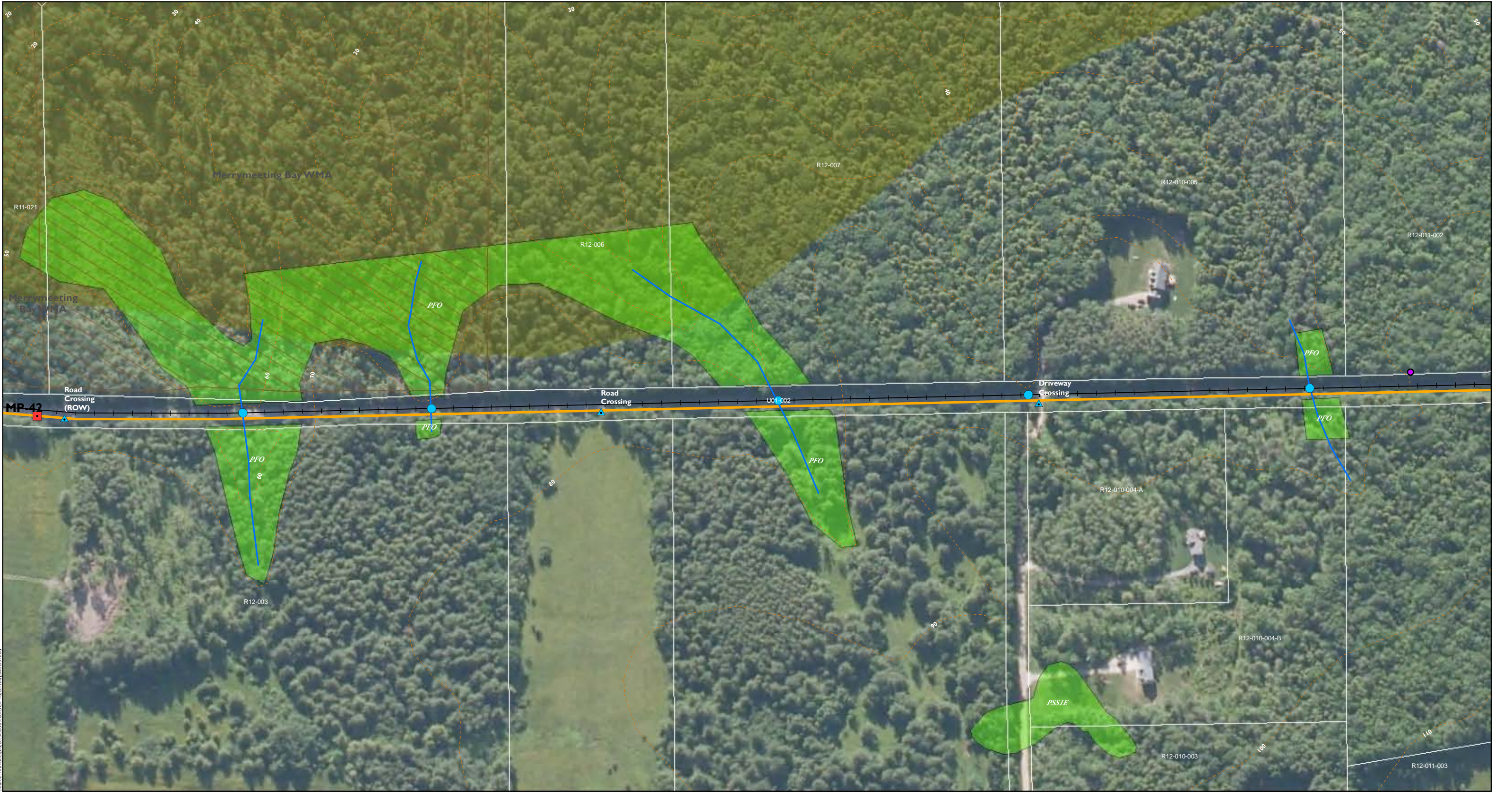




Legend

- | | | | | | | |
|------------------------|------------------------|-------------------------|-------------------|--|--|-----------------------|
| — Single Track Section | Typical Trail Sections | ● Mile Post | ⚡ Crossing Signal | ▲ Property Marker | ● Field Identified Potential Vernal Pool | 🦌 Deer Wintering Area |
| == Dual Track Section | Normal Path Typical | ◇ Stone Monuments | ■ Electrical Box | ▲ Miscellaneous Points | ■ MEIFW Potential Vernal Pool | FLOODWAY |
| — Bridge Crossing | Normal Fill Typical | Railroad Equipment | ■ Signal Control | — Concrete/Stone Wall | 🌿 Wetland Boundary | ▨ FEMA 100-Yr Flood |
| | Ledge A Typical | ✕ Crossing Signal Gates | Ⓢ Switch Station | — Fence | Rare, Endangered, Threatened, Species | ▨ Conserved Land |
| | Ledge B Typical | ⊗ Crossing Sign | — Other Trails | — Areas of Ledge | 🦅 Bald Eagle Nest Buffer | — Streams |
| | Extreme Fill Typical | | ● Culvert | — Steep Slopes | 🐊 Tidewater Mucket | ▨ Town Boundary |
| | | | | — Existing Androskoggin Multi-Use Path | 🦆 Inland Waterfowl & Wading Bird Habitat | --- 10' Contours |
| | | | | — Potential Trail Connection | 🦆 Tidal Waterfowl & Wading Bird Habitat | |





Legend

- | | | | | | | |
|--------------------------|------------------------|-------------------------|-------------------|---|--|-----------------------|
| —+— Single Track Section | Typical Trail Sections | ● Mile Post | ⚡ Crossing Signal | ▲ Property Marker | ● Field Identified Potential Vernal Pool | 🦌 Deer Wintering Area |
| == Dual Track Section | Normal Path Typical | ◇ Stone Monuments | ■ Electrical Box | ▲ Miscellaneous Points | ■ MEIFW Potential Vernal Pool | FLOODWAY |
| — Bridge Crossing | Normal Fill Typical | Railroad Equipment | ■ Signal Control | — Concrete/Stone Wall | 🌿 Wetland Boundary | ▨ FEMA 100-Yr Flood |
| | Ledge A Typical | ✕ Crossing Signal Gates | Ⓢ Switch Station | — Fence | Rare, Endangered, Threatened, Species | ▨ Conserved Land |
| | Ledge B Typical | ⊗ Crossing Sign | — Other Trails | — Areas of Ledge | 🦅 Bald Eagle Nest Buffer | — Town Boundary |
| | Extreme Fill Typical | | ● Culvert | — Steep Slopes | 🐟 Tidewater Mucket | — 10' Contours |
| | | | | — Existing Androscooggin Multi-Use Path | 🦢 Inland Waterfowl & Wading Bird Habitat | |
| | | | | — Potential Trail Connection | 🦢 Tidal Waterfowl & Wading Bird Habitat | |

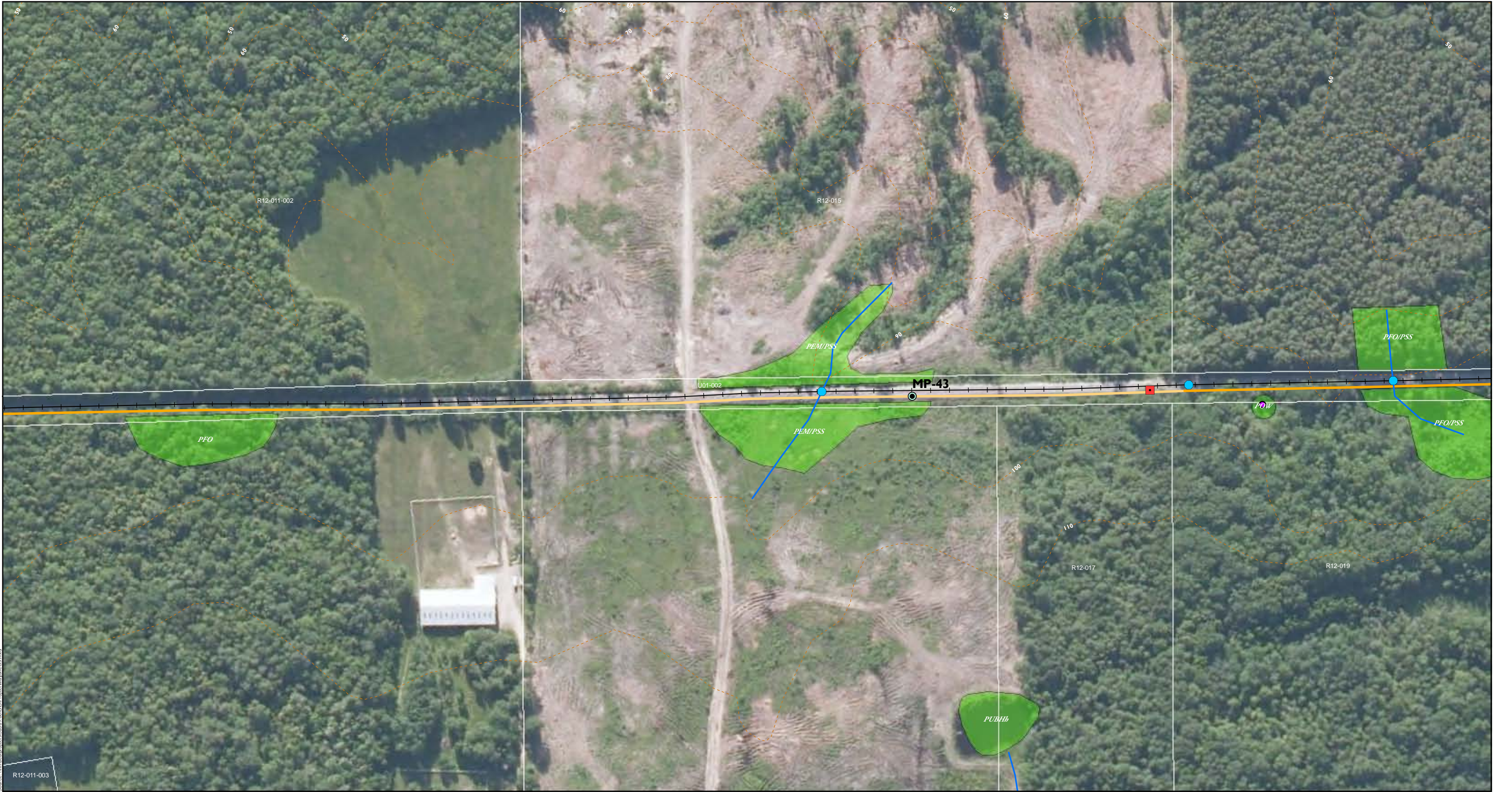


Sheet 19

**Merrymeeting Trail
Corridor Study**

Topsham to Gardiner Maine

March 2011



Legend

- | | | | | | | |
|----------------------|----------------------------|-----------------------|-----------------|--|--|---------------------|
| Single Track Section | Typical Trail Sections | Mile Post | Crossing Signal | Property Marker | Field Identified Potential Vernal Pool | Deer Wintering Area |
| Dual Track Section | Normal Path Typical | Stone Monuments | Electrical Box | Miscellaneous Points | MEIFW Potential Vernal Pool | FLOODWAY |
| Bridge Crossing | Normal Fill Typical | Railroad Equipment | Signal Control | Concrete/Stone Wall | Wetland Boundary | FEMA 100-Yr Flood |
| Ledge A Typical | Ledge B Typical | Crossing Signal Gates | Switch Station | Fence | Rare, Endangered, Threatened, Species | Conserved Land |
| Extreme Fill Typical | Other Trails | Crossing Sign | Culvert | Areas of Ledge | Bald Eagle Nest Buffer | Town Boundary |
| | Steep Slopes | | | Existing Androscooggin Multi-Use Path | Tidewater Mucket | Streams |
| | Potential Trail Connection | | | Inland Waterfowl & Wading Bird Habitat | Tidal Waterfowl & Wading Bird Habitat | 10' Contours |

